



Video 5

Exchange Management Console

© Train Signal, Inc., 2002-2007

Where we're going



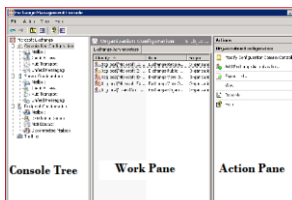
- Console Layout
- Architecture
- Role Delegation
- Grand Tour
- Finalization Tasks
- Toolbox and Extras
- 32-bit Edition

© Train Signal, Inc., 2002-2007

Layout of EMC



- How the Exchange Management Console is arranged
 - Three work-panes



© Train Signal, Inc., 2002-2007

Architecture Tie-in – Part 1



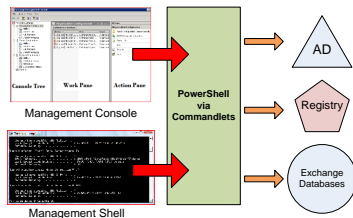
- **The Console and Shell make changes to data in three areas**

- The Active Directory
- The Registry
- The Exchange Database

PowerShell "commandlets" are used to make all changes:

© Train Signal, Inc., 2002-2007

Architecture Tie-in – Part 2



© Train Signal, Inc., 2002-2007

Role Delegation



- **How roles work**

- Roles give access to a specific sphere of configuration
- Goal: No more Access Control List (ACL) tweaking
- The EMC layout is broken down into the spheres of control

© Train Signal, Inc., 2002-2007

Tour of EMC



- **What sort of tour:**

- High level
- Taking care of some finalization tasks

© Train Signal, Inc., 2002-2007

Toolbox



- **Tools in the toolbox**

- Best Practices Analyzer
- Disaster Recovery
- Mail Flow Tools
- Performance Tools

- **More tools that are downloadable:**

- Jetstress
- Load Generator
- Profile Analyzer

© Train Signal, Inc., 2002-2007

32-bit edition



- **Hey wait a sec... 32-bit?**

- Limitations
- Where to get it
- How to use it for management ease

© Train Signal, Inc., 2002-2007
