



## Video 8 Going Live

© Train Signal, Inc., 2002-2007

---

---

---

---

---

---

---

---

## What We'll Be Covering



- Scenario
- Checklist
- Checking DNS
- Checking listening ports
- Testing inbound/outbound email flow

© Train Signal, Inc., 2002-2007

---

---

---

---

---

---

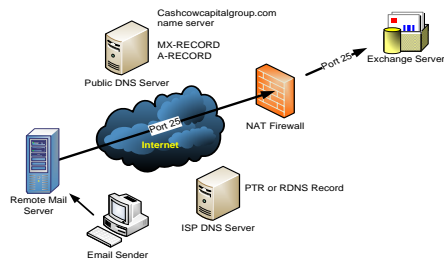
---

---

## Diagram



### A Review of the Basics



© Train Signal, Inc., 2002-2007

---

---

---

---

---

---

---

---

## Going Live Checklist



- **Here's what needs to be in place:**

- External DNS
  - MX-record for each domain & corresponding A-record
    - cashcowcapitalgroup.com
    - czechdormbro.com
  - PTR or Reverse-DNS record for IP
- Firewall rule allowing inbound port 25
- Outbound port 25 access
- Exchange Server listening on port 25
- Authorized domains configured
- Email address policy configured

© Train Signal, Inc., 2002-2007

---

---

---

---

---

---

---

---

## Testing Email



**Manually sending an email**

- Telnet to port 25 on the server: `telnet cowmail.cashcowcapitalgroup.com 25`

```
C: HELO trainsignal.com
C: MAIL FROM: <david@trainsignal.com>
C: RCPT TO: <dshack@cashcowcapitalgroup.com>
C: DATA
C: Subject: test message
C: From: david@trainsignal.com
C: To: dshack@cashcowcapitalgroup.com
C:
C: Hello,
C: This is a test.
C: Goodbye.
C: .
C: QUIT
```

© Train Signal, Inc., 2002-2007

---

---

---

---

---

---

---

---

## Wrap-up



- **Where we've been:**

- Looking at the basic big picture
- Verifying DNS setup
- Checking firewall/ports setup
- Checking server configuration
- Setting the receive connector settings
- Testing email from the outside
- Setting up a send connector
- Testing outbound mail

© Train Signal, Inc., 2002-2007

---

---

---

---

---

---

---

---